



Stanburn Primary School

*Believe, Achieve, Succeed
Learning Without Limits*

Welcome TO YEAR 1

1 Ruby

1 Poppy

1 Scarlet

We hope you had a relaxing summer!



Staff

The Year 1 team includes:

Class	Class Teacher	Teaching Assistants
1Ruby	Mrs Patel	Mrs Patel Mrs Jiwani Mrs Akram Mrs Firdaus
1 Poppy	Miss Rahanu	
1Scarlet	Mrs Wang	



Stanburn Primary School

*Believe, Achieve, Succeed
Learning Without Limits*

OUR VISION

Inspire personal growth
with the child at the
centre

Parents, children and
staff

**To nurture a community of aspirant
learners to achieve excellence.**

All of us, every
day

Never settling for
good enough but
striving for the best,
every day



Believe, achieve, succeed
Learning without limits

VALUES

Respectful

Optimistic

Kind

LEARNING BEHAVIOURS

Hard working!

Growth Mindset

A belief that effort matters!

Curious!



Collaborative!

Resilient!



Uniform

Believe, Achieve, Succeed
Learning without Limits

All pupils are expected to wear **full, smart school uniform each day.**

At the end of last year, changes were made to our uniform policy and by September 2026 we expect all pupils to wear **navy and gold ties.**

PE kit may be worn on PE days. PE t-shirts no longer need to be linked to house colours. By September 2026, all pupils should have a **sky blue PE t shirt.**

Trainers are not part of school uniform and pupils should only wear these on PE days.

UNIFORM4KIDS

PULLENS

Stanburn Primary School | Uniform List 2025



SKU	Item	Description	Prices
6770	V-neck Pullover	Navy with yellow trim, embroidered with school logo, 50% cotton / 50% acrylic	£20.99-£25.99
8138	Cardigan	Navy, embroidered with school logo, 50% cotton / 50% acrylic	£21.99-£27.99
6748	Tie	Navy/Gold striped, Elastic, Clip On (14") or normal (45")	Year 2+ £6.50-£7.50
4407	Shirts	White, closed neck, twin pack	Year 2+ £14.99
4494	Blouses	White, closed neck, twin pack	Year 2+ £14.99
8670	T-Shirt	Navy, embroidered with school logo	Nursery £7.99
4467	Polo Shirts	White	Reception-Year 1 £7.99
2040	Boys Trousers	Grey	£13.99-£16.99
8910	Girls Trousers	Grey	£18.99
2850	Pinafore	Grey	£19.99
1563	Skirt	Grey	£16.99
1255	Socks	Grey, 5 pack	£9.50-£9.99
1911	Tights	Grey, twin pack	£12.99
6785	Bookbag	Navy, printed with school logo	£12.99
Summer Uniform			
8138	Cardigan	Navy, embroidered with school logo, 50% cotton / 50% acrylic	£21.99-£27.99
4078	Summer Dress	Blue/White, Check	£16.99-£17.99
1255	Socks	White, 5 pack	£9.50-£9.99
Sports Kit			
6845	Sweatshirt	Navy, embroidered with school logo	£14.99 - £17.99
6889/8670	T- Shirt	Sky Blue, embroidered with school logo	Reception-Year 6 £7.99 - £9.99
7046	Shorts OR	Navy, BS3082 Shadow shorts	£4.75-£5.99
1995	Shorts	Navy, poly/cotton	£6.99-£8.50
3365	Jog Bottoms	Navy	£13.99
4414	Plimsolls	Black	£8.99 - £12.99
	Trainers	Non marking	Year 3-6
4098	Swimsuit	Navy or Black	Year 5 £18.99
4095	Swimtrunks	Navy or Black	Year 5 £17.99



Additional update:

We have also now updated our uniform policy with the following:

Nails should be kept short, clean and natural – no nail polish, extensions of false nails are permitted.





ParentPay

Lunches

The lunch menu has been sent to parents for this term so please discuss the options with your children each week so they know what to order. If a child has any allergies, please complete an allergy survey online.



Spring/Summer Menu Week 1 14 th April 5 th May 28 th May 16 th June 7 th July 28 th July 18 th Aug 8 th Sept 29 th Sept 20 th Oct 2025					
WEEK ONE	OLD ENGLISH MONDAY	INDIAN TUESDAY	ROAST WEDNESDAY	PIZZA THURSDAY	FISH & CHIP FRIDAY
Red Option (Meat)	Chicken Sausage Toad in the Hole & Herby Diced Potatoes	Red Tractor Mild Chicken Curry, Mixed Wholegrain & White Rice	Roast Chicken, Gravy, Stuffing & Mashed Potato or Roast Potatoes	Wholemeal Margherita Pizza & Pasta Salad	MSC Fish Fingers & Chips
Blue Option (Halal)	Halal Chicken Sausage Toad in the Hole & Diced Potatoes	Halal Red Tractor Mild Chicken Curry, Mixed Wholegrain & White Rice	Halal Roast Chicken, Gravy, Stuffing & Roast Potatoes	Wholemeal Margherita Pizza & Pasta Salad	MSC Fish Fingers & Chips
Green Option (Vegetarian)	Cheese, Onion & Potato Pie & Diced Potatoes	Mild Sweet Potato & Chickpea Curry & Mixed Wholegrain & White Rice	Rainbow Vegetable Lentil Pitta Pockets & Hummus	Beany Shepherd's Pie	Vegetable & Bean Quesadilla, Chips
Yellow Option	Jacket Potato with Cheesy Beans, Tuna or Cheese or Beans	Cheesy Pasta	Cheese Sandwich	Cheesy Pasta	Jacket Potato with Cheesy Beans, Tuna Cheese or Beans
Vegetables	Broccoli, Cauliflower & Carrots & Sweetcorn	British Red Tractor Garden Peas, Sliced Carrots	Broccoli, Cauliflower & Carrots	Carrot & Cucumber Sticks or Garden Peas, Sweetcorn	Garden Peas, Baked Beans
Dessert	Banana Mousse & Orange Smiles	Marble Sponge & Chocolate Sauce	Strawberry Jelly with Watermelon Slice	Vanilla Cookie	Iced Sponge Cake with Sprinkles

<download.asp>



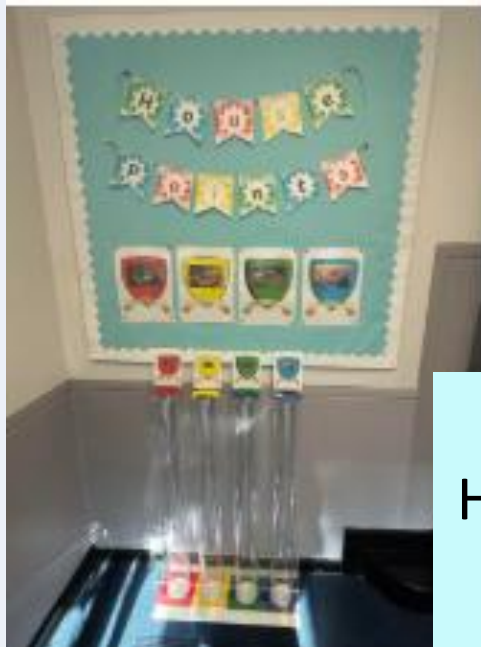


Believe, achieve, succeed
Learning without limits

Behaviour

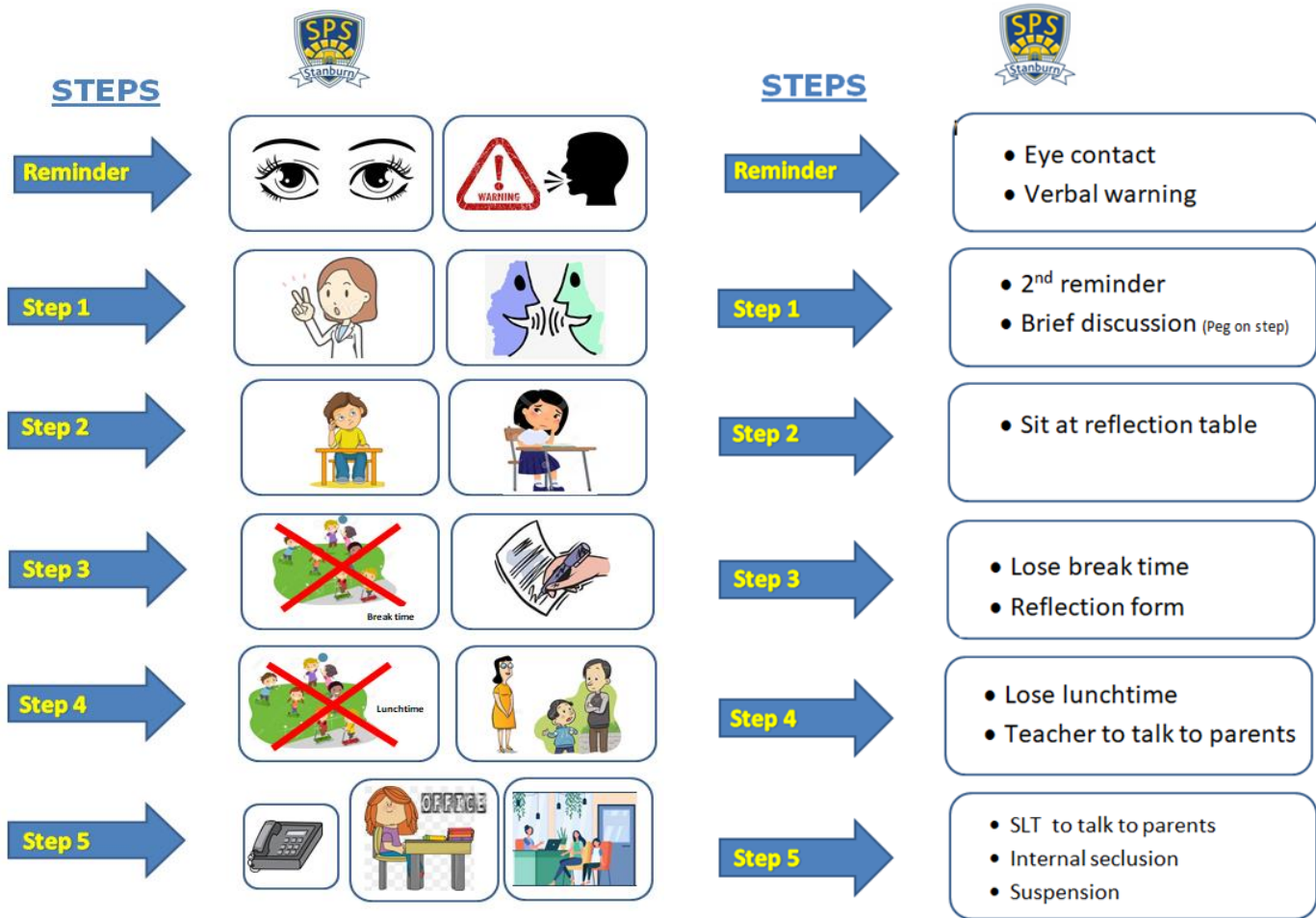
We continue to expect the highest standards of behaviour from our children. We promote positive behaviour by rewarding pupils with:

- Dojo points
- Merit awards
- Value of the half-term



and....
HOUSEPOINTS...
watch this
space!





Behaviour

Our 5 step behaviour plan supports pupils making positive choices.



Communication

Believe, achieve, succeed
Learning without limits

The school uses Class Dojo as an informal communication channel with parents. Parents can see their child's dojo points and also have access to their child's Class Story and the School Story. The Class Story can only be seen by parents of the class. The School Story can be seen by all parents.

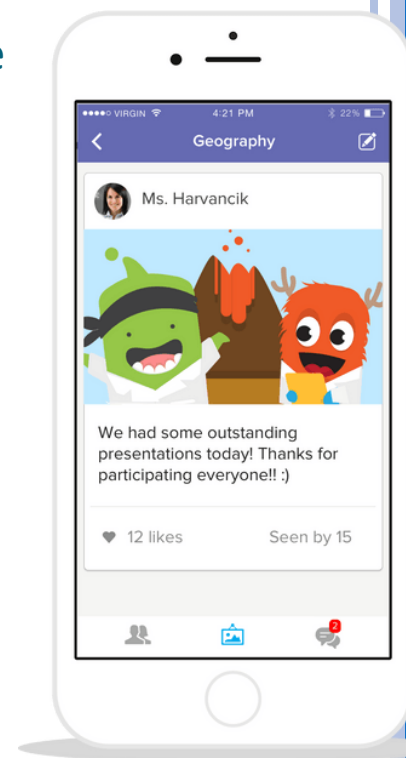


ClassDojo

People outside of Stanburn Primary School cannot access our account. The Class/School Story might include pictures of the children working, children celebrating success or provide information for parents from the class teacher. Parents can like posts and can comment. Negative comments are not permitted and will be deleted.

Parents are also able to message the class teacher. Messages should be short questions or information the class teacher needs to be aware of. Messages should not be complaints/serious concerns or requests for performance updates. Instead, requests of this nature should be sent to the school office. Absence messages must also be sent to the school office.

Please note, staff will reply to messages within working hours only.



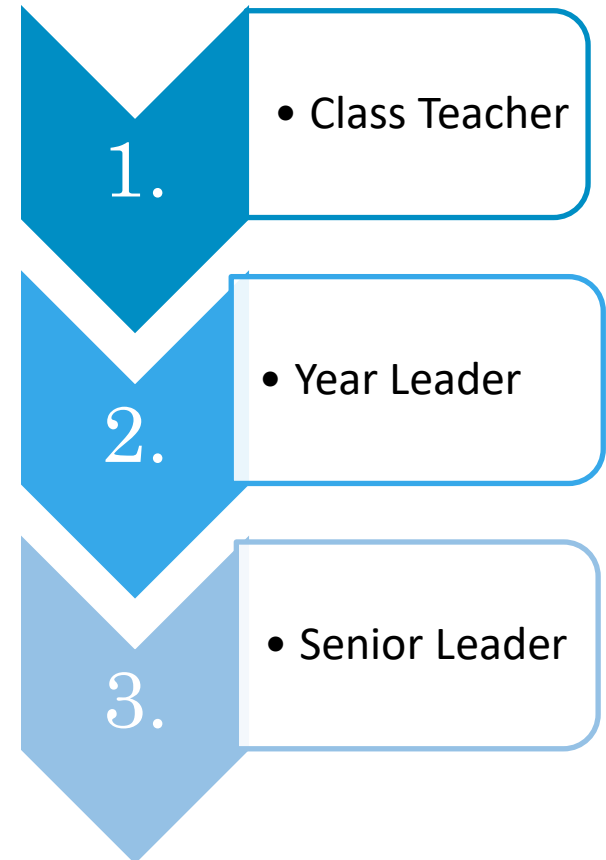
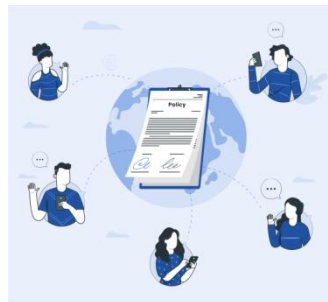


Believe, achieve, succeed
Learning without limits

Communication

If you have any concerns about social behaviours or bullying please follow the below procedures:

1. In the first instance, make an appointment to speak with your child's class teacher.
2. If, following your discussion with the class teacher you would like more information, make an appointment to speak with your Year Leader who is responsible for the year group.
3. If further support is required, the concern will be referred to a member of the Senior Leadership Team.





Believe, Achieve, Succeed
Learning without Limits

Trips and Learning Enrichment at Stanburn

We are passionate about providing our pupils with a range of enrichment opportunities to support work which takes place within the classroom. Across the school year, pupils will attend a range of experiences both in school and out of school. Where possible, trips which take place outside of school will make use of the TfL's travel scheme and pupils will walk to trips which are within a 30 minute walking radius of the school.

In addition to this, all learning enrichment opportunities here at Stanburn Primary School link to one of 'Our 5 for Five - Developing Cultural Capital' statements which ensure every pupil will be able to develop:

- A sense of self
- A sense of community
- A sense of culture
- A sense of awe and wonder
- A sense of their future

*Please note, a firm booking for workshops and trips will **not** be made by the school until the payment deadline (as detailed in the letter). If by this date, parents have not paid, the workshop will be cancelled.*





BELIEVE, ACHIEVE, SUCCEED

LEARNING WITHOUT LIMITS

ENRICHMENT

We already have many engaging trips/workshops organised in Year 1.

	Autumn 1	Autumn 2	Spring 1	Spring 2	Summer 1	Summer 2	Cost
Year 1	<i>A sense of awe and wonder - 1</i> Autumn Walk Local Area Science - Seasonal Changes Free	<i>A sense of awe and wonder - 1</i> Winter Walk Local Area Science - Seasonal Changes Free	<i>A sense of awe and wonder - 3</i> Hertfordshire Zoo Science - Animals including Humans (Animal Trackers Workshop) £22.00 £10 admission + coach	<i>A sense of awe and wonder - 1</i> Spring Walk Local Area Science - Seasonal Changes Free	<i>A sense of culture - 5</i> Shree Swaminarayan Temple RE - Hinduism Free + active travel	<i>A sense of awe and wonder - 1</i> Summer Walk Local Area Science - Seasonal Changes Free	£28
	<i>A sense of culture - 2</i> Visit from Grandparents History - Now and Then Free In classrooms			<i>A sense of community - 2</i> Visit Local High Street Geography - What is it like in my local area? Free		<i>A sense of culture - 1</i> Paul Stickland Author Workshop English - Narrative DT - Pop up story books £6 In school	

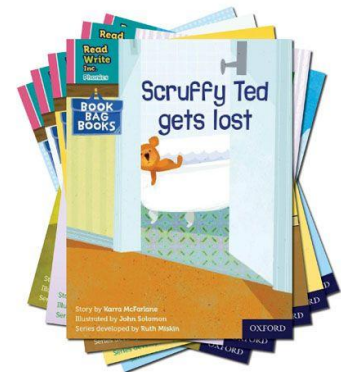


Believe, achieve, succeed
Learning without limits



Reading in Year 1

- Our mission at Stanburn Primary School is to teach every child to read – and to keep them reading, with no exceptions.
- We teach our pupils in Stanburn the foundations of reading using our chosen Systematic Synthetic Phonics Scheme Read Write Inc.
- Reading lessons are prioritised across our whole school. Phonics and **reading lessons take place daily** in Year 1 where they are explicitly taught a new sound each day.
- Each week children in Year 1 will take a 'Read Write Inc' phonics book home. These phonically decodable home reading books link directly to children's current phonics knowledge and learning. These books are to be **read at home each day for at least 15 minutes**.





Believe, achieve, succeed
Learning without limits

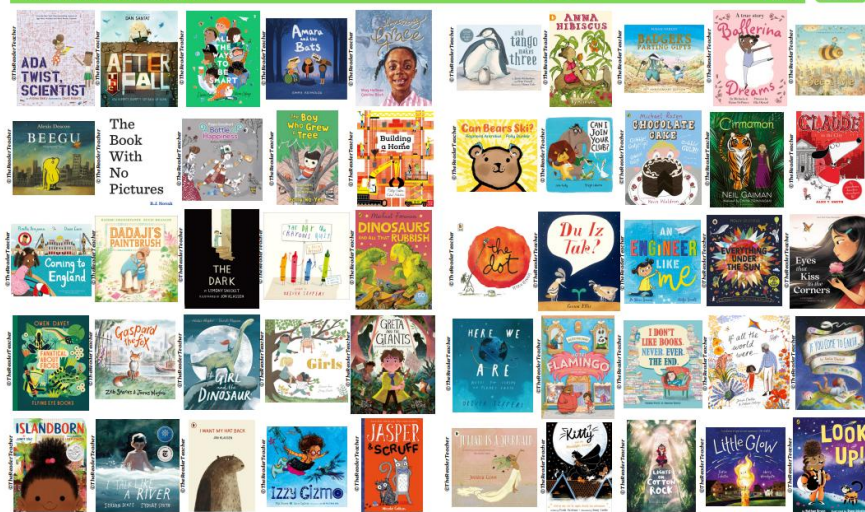


Reading for pleasure in Year 1

We not only want our children at Stanburn to learn to read – we ensure our pupils develop a love of reading by exposing them to high quality texts each day during storytime and throughout the curriculum.

Our pupils will take home a book to read for pleasure alongside their home

The Reader Teacher Top 100 Recommended Reads for Year 1 for ages 5-6+ Poster



Scan this QR code to purchase the pack through Reading Rocks! For more primary school recommended reads booklists, visit TheReaderTeacher.com

The Reader Teacher Top 100 Recommended Reads for Year 1 for ages 5-6+ Poster



Scan this QR code to purchase the pack through Reading Rocks! For more primary school recommended reads booklists, visit TheReaderTeacher.com

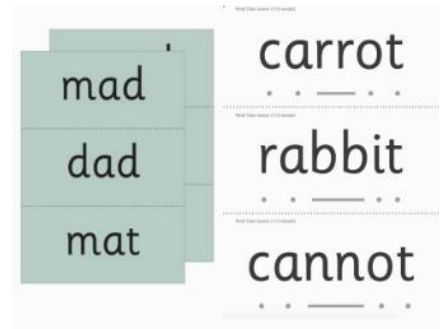
<https://www.thereaderteacher.com/year1>



Believe, achieve, succeed
Learning without limits

How to support reading at home.

- **We expect children in Year 1 to read for at least 15 minutes at home each day.** Please comment in your child's home reading record three times a week and encourage your children to share their opinions about the texts they have read.
- **Children will also be allocated Read Write Inc. videos to watch and online games to play** to help them consolidate the new sounds they have learnt that week.
- **Please complete any phonics activities that are sent home** – these will differ between pupils depending on which group your child is in.





Believe, achieve, succeed
Learning without limits

How to support reading at home.

Parents are able to purchase Read Write Inc. 'Home Learning Kits'.

Each kit contains resources matched to the phonics set your child will be working within, including:

- Illustrated flashcards
- Wipe-clean sheet and pen
- Handwriting books
- Posters and sticker sheets
- Storybooks
- Parent handbook

<https://home.oxfordowl.co.uk/bookshop/read-write-inc-phonics-reading-at-home/>





Believe, achieve, succeed
Learning without limits

Phonics Screen Check

What is the Phonics Screening Check?

The Phonics Screening Check was introduced in 2012 in primary schools in England. All children in Year 1 take it in the summer term.

How does the Phonics Screening Check work?

The Check consists of 40 words and non-words that your child will be asked to read one-on-one with a teacher. Non-words (or nonsense words, or pseudo words) are a collection of letters that follow phonics rules your child has been taught, but don't mean anything – your child will need to read these with the correct sounds to show they understand the phonics rules behind them. The 40 words and non-words are divided into two sections .



Believe, achieve, succeed
Learning without limits

Teaching and Learning across the Curriculum

Each week children will have the following

- English
- Maths
- Reading
- Handwriting, grammar sessions
- Spelling
- Science
- PE twice a week
- History / Geography
- PSHE
- Music
- Art/DT
- Computing
- RE



Believe, achieve, succeed
Learning without limits

Relationship and Health Education (RHE)

RHE is a statutory part the curriculum

RHE covers a variety of topics, with a particular emphasis on: **relationships, privacy, consent, rights & responsibilities, communication skills and scientific knowledge of the human body.**

It contributes to safeguarding pupils, promoting their emotional wellbeing and a positive ethos and environment for learning.

*In addition, at Stanburn Primary School, we base our PSHE lessons on **Jigsaw**: a PSHE Association Quality Assured scheme of work. More information can be found on our website.*

Stanburn Primary School - Personal,
Social, Health, Emotional (PSHE)

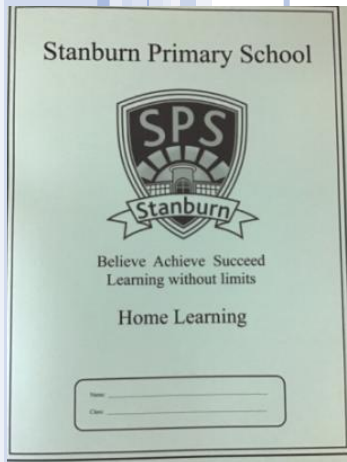




Believe, Achieve, Succeed
Learning without Limits

Home Learning

Children will be set Home Learning on Class Dojo every **Friday**. Home learning is recorded in pupils' Home Learning book each week. The children are responsible for bringing and handing in their homework on the following **Wednesday**.



Reading

All children need to read for at least 15 minutes per night following the guidance on the previous slides. They must write comments in their Reading Diaries (at least three times a week) and this must be signed by parents weekly. This should be handed in on Wednesday.
This will be checked every **week**.



Believe, Achieve, Succeed
Learning without Limits

Home Learning Guidance and Expectations

Year 1 Home Learning Expectations:

- Maths 'talk' homework or a worksheet which allows children to practise and apply what they have been learning throughout the week.
- My Maths task (online) weekly which is set by the teacher based on the children's current learning
- English talk homework or a worksheet based on their learning this week.
- Children take home one decodable phonics book and one storybook each week. They should be completing 15 minutes daily reading of their reading book. Parents must listen to children read and sign their reading diary weekly. Reading records are checked and signed weekly by staff and a comment will be written where necessary.
- Phonics activity based on the sound they are learning in phonics groups - accessed through Ruth Miskin portal.
- 10 spellings weekly to learn weekly accompanied by a Spelling Shed activity worksheet which must be completed.
- Spelling Shed (online) – 5 minutes daily.



Believe, Achieve, Succeed
Learning without Limits

Home Learning – Online Platforms

As a school, we subscribe to a range of online platforms which as well as written home learning, pupils are expected to access at home each week. These are:

MyMaths

School username

School password

MyMaths

Using coins
Q1 – Coin swap

Q1
 $\frac{0}{4}$

Choose coins to make the amount shown.
Click on the coins to choose them.

Make

Make

Make

Make

Mark it



Believe, Achieve, Succeed
Learning without Limits

Home Learning – Online Platforms

As a school we subscribe to a range of online platforms which as well as written home learning, pupils are expected to access at home each week.

Spelling Home Learning

From this year, children will receive **10 spellings to learn weekly** and a **spelling home learning worksheet** each week on a Friday; pupils will be expected to complete the worksheet and learn the new words, as well as **revising previously learnt words using the online platform**, each week. Spelling tests will then take place on **Wednesday** – the same day that home learning is due in.

Spelling Shed





Believe, achieve, succeed
Learning without limits

Start and end of the day...

Attendance and Punctuality

It is incredibly important that children are in school everyday, on time. Children should arrive between 8:25-8:40am. We begin our learning shortly after this time so it is imperative children are in school promptly.

Missing even 5 minutes of school a day impacts on your child's learning.

MOMENTS MATTER, ATTENDANCE COUNTS!

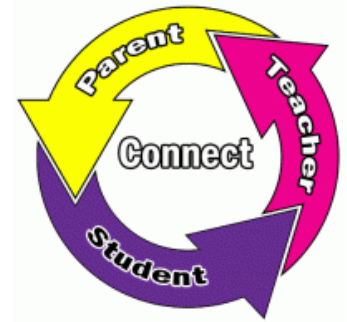
End of the day collection is at 3:15pm



DID YOU KNOW? If you are 15 minutes late each day you will have missed 2 full weeks of school in one year?



Believe, achieve, succeed
Learning without limits



Working in Partnership

The year team would like to work in partnership with parents and guardians to ensure that we all have a productive year.

Please:

- Read regularly with your children.
- Have conversations with your children about their learning.
- Support home learning.
- Read the [curriculum newsletters](#).
These are digital newsletters which can be viewed online. The link will be sent to parents this week.
- Read the school newsletters and check Class Dojo regularly.





Believe, achieve, succeed
Learning without limits

Thank you!

