



Stanburn Primary School

*Believe, Achieve, Succeed
Learning Without Limits*

Welcome

TO YEAR 3

3 Canary

3Dijon

3Saffron

3Daffodil

We hope you had a relaxing summer!



*Believe, achieve, succeed
Learning without limits*

Teaching and Learning across the Curriculum

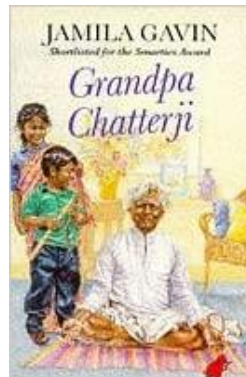
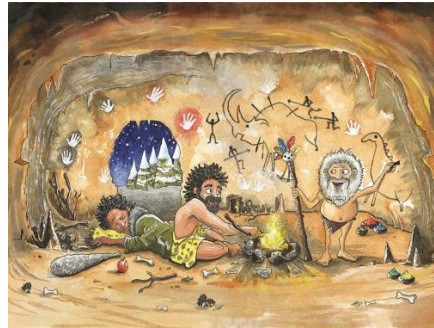
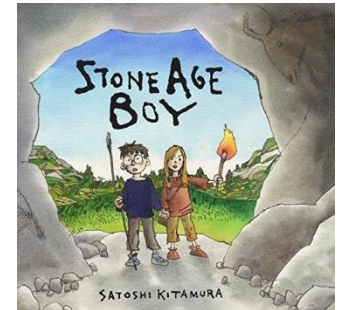
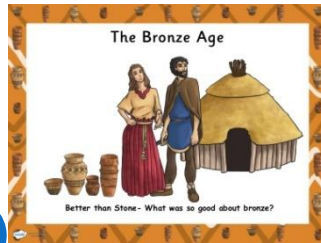
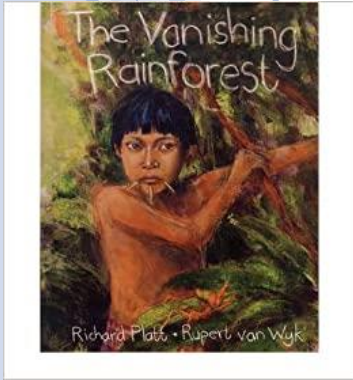
Each week children will take part in:

- Daily English lessons*
- Daily Maths lessons*
- Spelling activity*
- Reading sessions*
- PE twice a week*
- History / Geography/Science*
- PSHE*
- Art /DT*
- Children carry out an Early Learning activity each day*

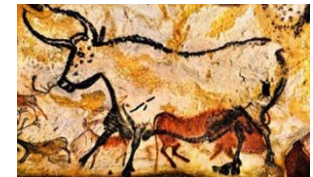
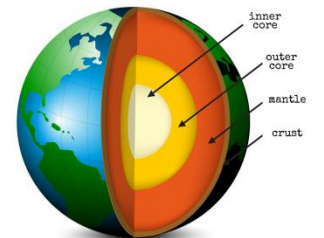


Believe, achieve, succeed
Learning without limits

Year 3 Curriculum



LAYERS OF THE EARTH





*Believe, achieve, succeed
Learning without limits*



Relationship and Health Education (RHE)

RHE is part of our curriculum and is tailored to meet the needs of our pupils at each stage in their development and maturity, focusing on relationships.

- RHE covers a variety of topics, with a particular emphasis on: relationships, privacy, consent, rights & responsibilities, communication skills and scientific knowledge of the human body.
- It contributes to safeguarding pupils, promoting their emotional wellbeing and a positive ethos and environment for learning.

In addition, at Stanburn Primary School, we base our PSHE lessons on Jigsaw: a PSHE Association Quality Assured scheme of work.



*Believe, achieve, succeed
Learning without limits*

Home Learning

Children will be set home learning on MS Teams every Friday.

Home learning is recorded in the Home Learning book each week. The children are responsible for bringing and handing in their homework on the following Wednesday. You do not need to print.

Spelling

The children will also receive Spelling homework each week on a Friday; their spelling test/dictation will take place the following Friday.

Home learning is checked every week. Any gaps in learning are addressed in class, group work or 1:1.



*Believe, achieve, succeed
Learning without limits*

Reading

All children need to read for at least 15 minutes per night. They must write comments in their Reading Diaries every school night and this must be signed by parents weekly. This will be checked every week on a Wednesday.





*Believe, achieve, succeed
Learning without limits*

Working in Partnership

The year team would like to work in partnership with parents and guardians to ensure that we all have a productive year.

- Read regularly with your children,*
- Have conversations about their learning,*
- Read the newsletter every half term that discusses what the children are learning*
- Complete homework each week*



*Believe, achieve, succeed
Learning without limits*

Working in Partnership

At the end of the school day, it is very important to us all that every single child in our school goes home safely.

'Collection points' have been posted out on parent mail. Different year groups can be picked up in the places noted on this map and in the newsletter.

This is for the safety of all our students.

Please remember, if you are going to be late picking up please call the school office so class teachers can be informed.

Please remember, if collection arrangements are different, even for just a day or two, we need to know!

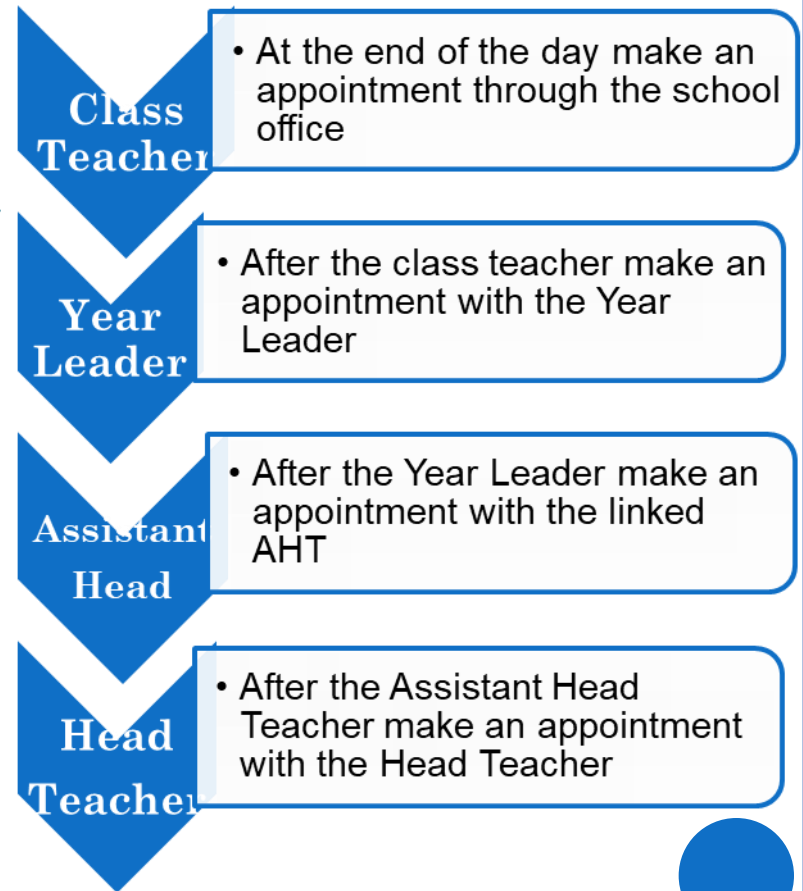


*Believe, achieve, succeed
Learning without limits*

If you have any further questions or concerns, please contact the school office and make an appointment in the first instance with your child's class teacher. We want to listen and help.

If you need further assistance, then you will need to book an appointment with the Year Leader.

Any further assistance required, please make an appointment to speak to the Assistant Head for the Year Group.





*Believe, achieve, succeed
Learning without limits*

Assessment

As we continue teaching the curriculum that was introduced in September 2014, we continue to assess without the old sub levels.

Teachers focus on what the children have demonstrated they can do and understand, and what they need more teaching and learning in.

We will continue to assess whether the children in our care are working towards, working within, or working securely against the learning objectives and standards set for each year group (the National Expectations).



*Believe, achieve, succeed
Learning without limits*

Putting your best foot forward...

Children need to learn to be organised and bring letters, home learning, musical instruments on the right days. PE kits must be worn to school on PE days



● *Children need to come to school ready to learn and looking smart in the correct school uniform.*



*Believe, achieve, succeed
Learning without limits*

Behaviour

We continue to expect the highest standards of behaviour from our children. We promote positive behaviour by rewarding pupils

Dojo points

Merit awards

Student of the month

Value of the month



Congratulations

50 dojos!



Super work!

Can you collect them all?



STEPS

Reminder

- Eye contact
- Verbal warning

Step 1

- 2nd reminder
- Brief discussion

Step 2

- Time out in class
- Lose break time

Step 3

- Go to another class
- Lose lunchtime

Step 4

- Reflection Form
- Teacher to talk to parents

Step 5

- Removal from class
- Internal suspension
- Suspension

Behaviour

Our 5 step behaviour plan supports pupils making positive choices.



*Believe, achieve, succeed
Learning without limits*



ClassDojo

We will be adding parents to Class Dojo. Parents will be able to see their child's dojo points and also have access to their child's Class Story and the School Story. The Class Story can only be seen by parents of the class. The School Story can be seen by all parents. People outside of Stanburn cannot access our account. Class/School Story might include pictures of the children working, children celebrating success, information for parents. Parents can like the post and can comment. All negative comments will be deleted.

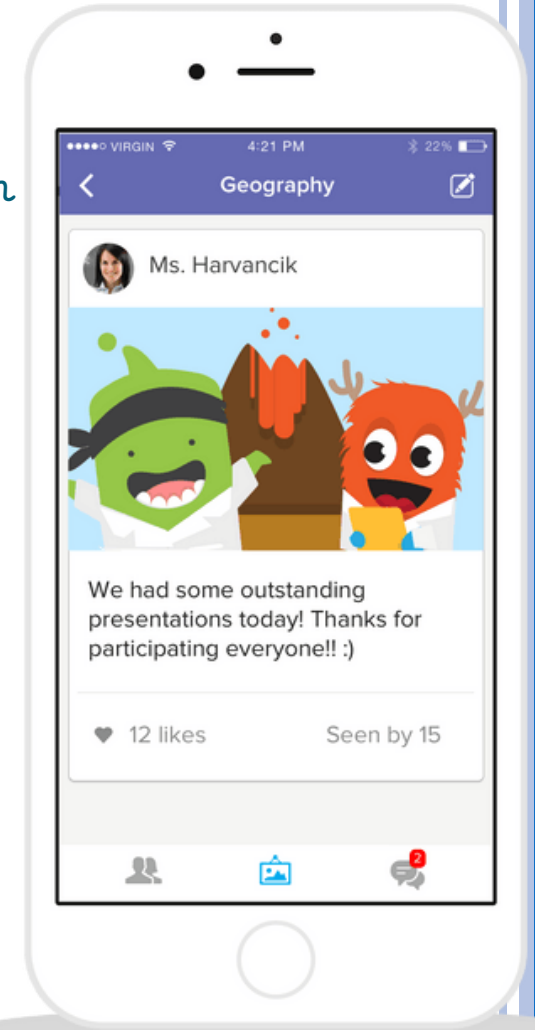
Parents will also be able to message the teacher.

Messages should be:

- short questions*
- informing the teacher of something*

They should not be

- complaints*
- requests for performance updates*





*Believe, achieve, succeed
Learning without limits*

Start and end of the day...

Attendance and Punctuality

It is incredibly important that children are in school everyday, on time. Children should arrive between 8:25-8:40am. We begin our learning shortly after this time so it is imperative children are in school promptly.

Missing even 5 minutes of school a day impacts on your child's learning.

End of the day collection is at 3:15



DID YOU KNOW? If you are 15 minutes late each day you will have missed 2 full weeks of school in one year?