



Stanburn School Improvement

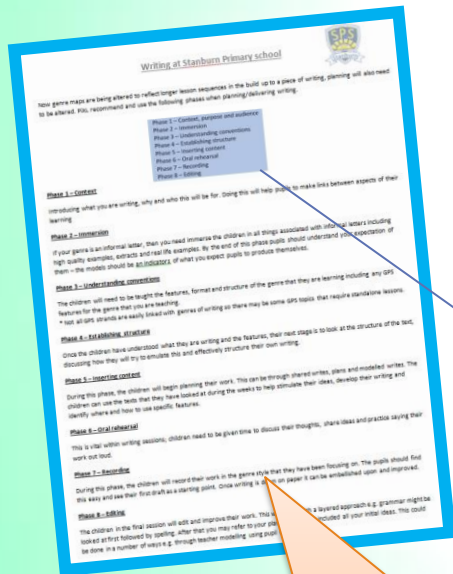
This term we focussed on improving writing, especially the assessment of writing. We are also developing our Happy Hub, due to launch in September 2023. To reward and incentivise effort in school, we introduced Friday Head's Honours where pupil celebrate their achievements with Ms D'Souza.

Spring 2 2023

PiXL Phases of Writing

In order to raise standards in writing and ensure genres are fully embedded before moving on, genre maps have been reviewed across the school. Year groups should now have a maximum of 3 genres to cover per half term.

With this change, lesson sequencing needed to be revisited and extended so we have introduced the PiXL phases of writing across the school.



WRITING

This term we have worked hard towards the targets outlined in our writing action plan: from attending **cluster writing meetings with other local schools**, delivering **CPD sessions linked to the PiXL phases of writing**, to leading a **whole school moderation meeting to review and moderate teacher assessments**. Please read on to see our writing journey so far...

Review of Genre Maps

Year 6 Genre Map					
Autumn 1 and Autumn 2	Spring 1	Spring 2	Summer 1 and Summer 2		
Genre	Genre	Genre	Genre	Genre	Genre
Nature	Adventure	Magical	Historical	Science Fiction	Horror
Texts Today: <i>Nature</i> Tomorrow: <i>Adventure</i> Poetry: <i>I am the seed</i> (poetry anthology) Poems about Nature	Texts Tomorrow: <i>Adventure</i> Today: <i>Adventure</i> Poetry: <i>I am the seed</i> (poetry anthology) Poems about Nature	Texts Today: <i>Adventure</i> Tomorrow: <i>Adventure</i> Poetry: <i>I am the seed</i> (poetry anthology) Poems about Nature	Texts Today: <i>Adventure</i> Tomorrow: <i>Adventure</i> Poetry: <i>I am the seed</i> (poetry anthology) Poems about Nature	Texts Today: <i>Adventure</i> Tomorrow: <i>Adventure</i> Poetry: <i>I am the seed</i> (poetry anthology) Poems about Nature	Texts Today: <i>Adventure</i> Tomorrow: <i>Adventure</i> Poetry: <i>I am the seed</i> (poetry anthology) Poems about Nature

- Phase 1 – Context, purpose and audience
- Phase 2 – Immersion
- Phase 3 – Understanding conventions
- Phase 4 – Establishing structure
- Phase 5 – Inserting content
- Phase 6 – Oral rehearsal
- Phase 7 – Recording
- Phase 8 – Editing

Celebrating Success

Finally, Writer of the Month certificates will be given to pupils at the end of March to celebrate the amazing writing here at Stanburn.



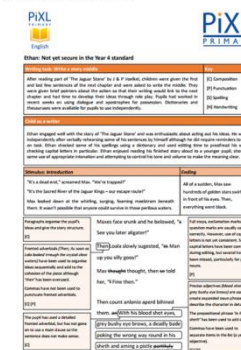
Whole School Moderation of Writing

Following our Autumn Data Drop, assessing writing was highlighted as an area of whole school improvement. Using PiXL teacher assessment frameworks (TAFs) and PiXL exemplifications of writing for each year group, the writing team led a whole school moderation of writing.

This provided teachers with an opportunity to sit in year groups to discuss pupils' writing, matching it against the year group writing indicators and grading pupils' work using the PiXL language of assessment.

Writing at Stanburn Primary School

PiXL Exemplifications



End of KS2 Exemplifications



This document: Writing at Stanburn, was shared with Year Leaders to further explain each stage of the PiXL Phases of Writing process.

Mrs Hartland

Next steps:

- Year 6 are piloting using online TAFs in a QLA format to hopefully be rolled out to the whole school in September.
- Review of marking and feedback policy for writing.



PLANNING FOR OUR HAPPY HUB

Mental Health
Audit completed

In September we plan to launch our **Happy Hub**. This will be central to our vision of supporting our children to achieve excellence whilst ensuring we create the best conditions for personal growth



Staff training
in place

Mental Wealthy

In April we are joined by an educational mental health practitioner once a week. She will work with families to support their children and will also offer support in school.



Mrs Adamson is now trained in understanding children and young people's mental health. She is also trained to deliver emotional literacy support.



Ms D'Souza is attending training to be our Senior Mental Health Leader

Socially Confident

Mrs Adamson, Mrs Chalk and Mrs Hajibey have all trained as Rainbows bereavement support therapists and will be offering sessions in this area.



Emotionally Regulated

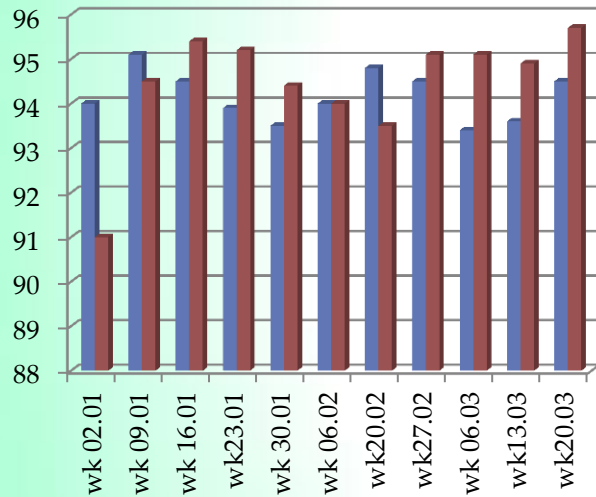
Ms D'Souza

IMPROVING ATTENDANCE AND PUNCTUALITY

We have continued to improve our attendance and punctuality figures . As a school our attendance figures are higher than the national figures . We are continuing to work on reducing the number of pupils coming late to school everyday.

Our attendance is currently **94.4%** But with your support we can achieve **97%!**

Spring term Attendance figures



Every Friday we have a virtual assembly and the classes with the best attendance and punctuality are announced. This week for the very first time ever we have had our assemblies in the hall.

■ National figures %
■ Stanburn %



Mrs Malik

Attendance and punctuality summary Spring

	Number of pupils	% Attendance	% Lates
04.01.23 to present	739	94.4%	1%

The bears have visited a number of different classes each week.

For the very first time ever 3Saffron and 6Pebble had **100%** attendance!